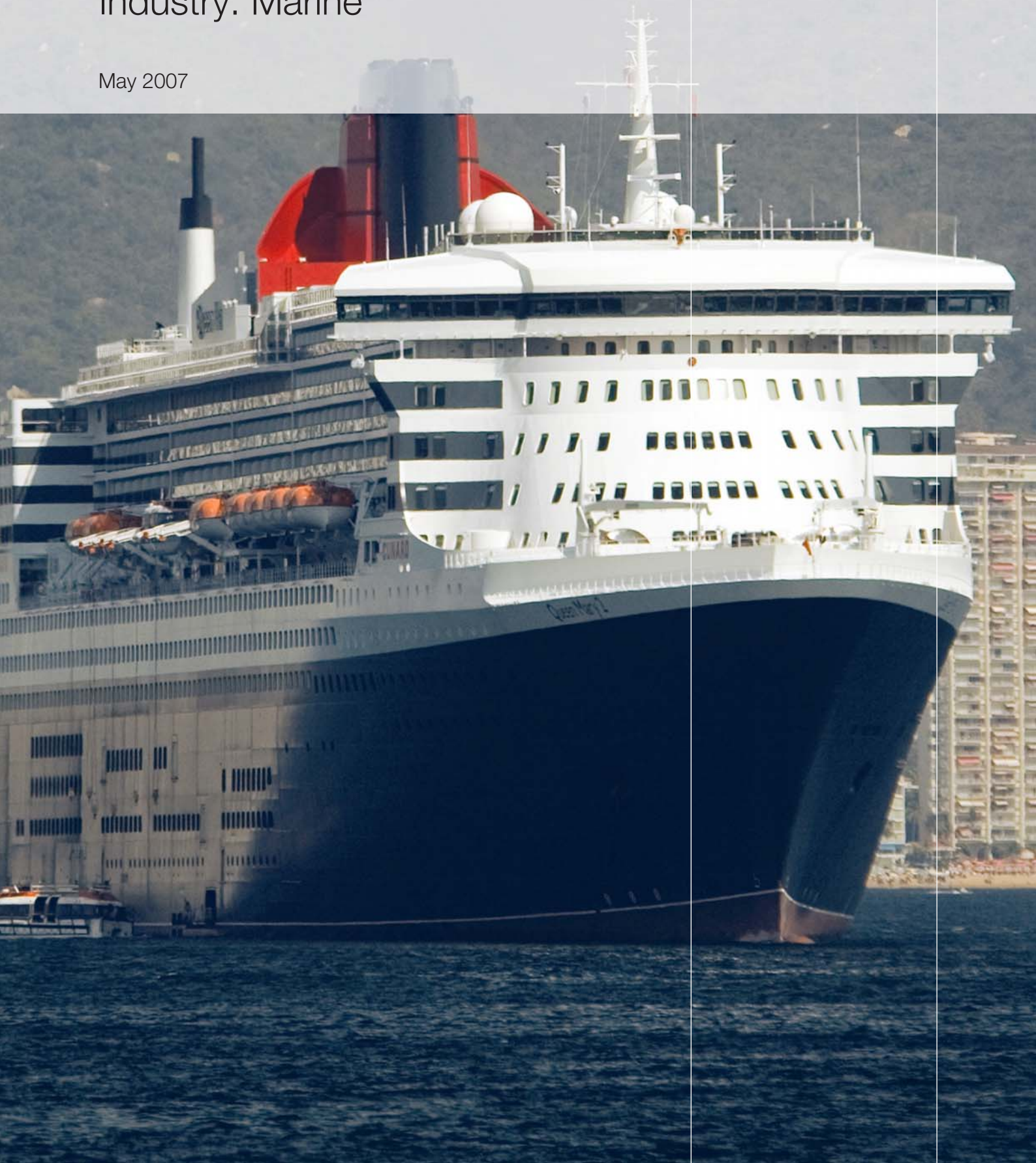


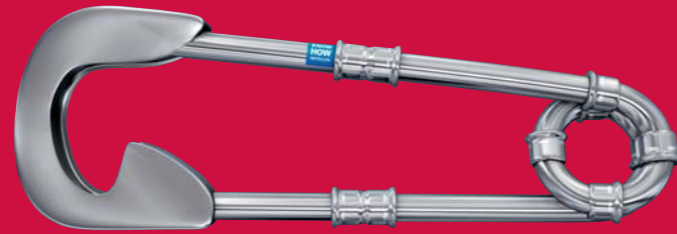
# Geberit Supply Systems Industry: Marine

May 2007



# Geberit Pressfitting Systems

Modern ships and offshore platforms involve a wide variety of applications for supply pipework systems including potable water, sanitation water, coolant, seawater, fuels, waste water, compressed air, gases and fire extinguishing systems. The Mapress pressfit piping system meets the requirements of all the uses and more.



Cold pressed jointing offers many benefits over soldering, brazing, or welding. Custom press tools ensure precision pressing of joints with no hot work, open flames, hazardous substances or chemicals, which is especially important in areas where flammable materials may be present.

Mapress pipe systems are lighter than conventional alternatives and easier to handle during installation. The unique geometry of Mapress press fittings gives greater seal contact area for added security and our patented leak path o-ring seal provides an instant visual indication of un-pressed joints, removing the need for subsequent inspection.

Available in outside diameters from 12mm to 108mm with working pressures to 16 bar, Mapress pipes and fittings are available in Stainless Steel (BS316 and BS304), Carbon Steel and Copper.

Our comprehensive range reduces the number of fittings required during installation - perfect for complex systems in confined spaces.

High grade pipe materials allow consistent on-site bending and high corrosion resistance. The risk of corrosion is minimised with fully annealed seam welds and high Molybdenum content of Mapress steel pipes ensures excellent durability.

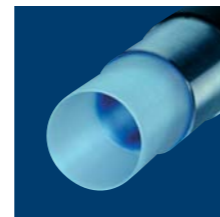
All components are 100% pressure tested to ensure perfectly tight, reliable connections that cannot be pulled apart.



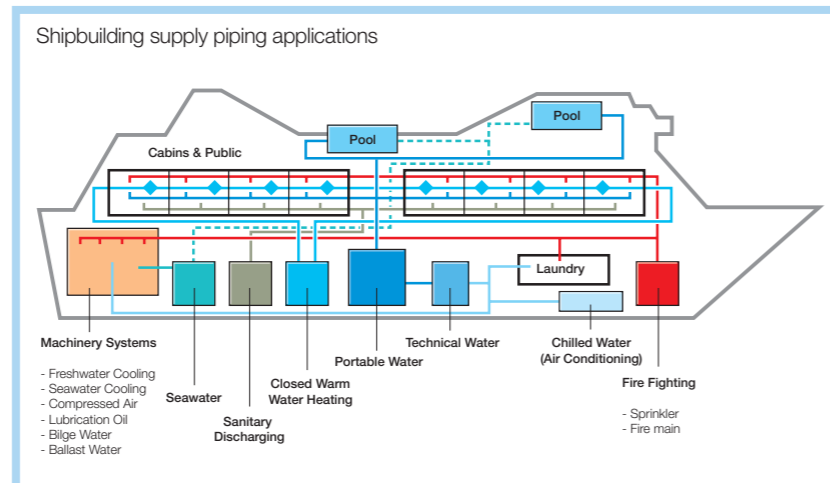
Patented leak path seal rings



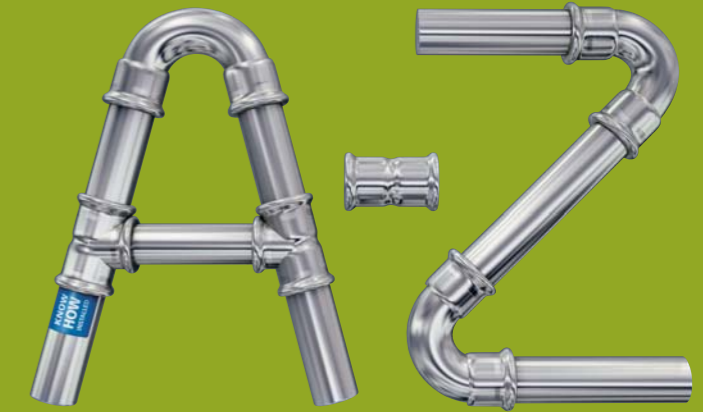
A multi layered composite piping system suitable for hot and cold water, heating and chilled water supplies, Mepla system pipes and fittings are available in diameters from 16mm to 75mm and are suitable for an operating pressure of up to 10 bar and operating temperatures of up to 70°C.



The composite structure offers the flexibility and ease associated with the installation of plastic pipes combined with the durability and stability of a metallic system. The internal PEX core prevents limescale and bacteria build up increasing hygiene, whilst the edge welded aluminium middle layer provides strength and stability; the HDPE outer gives excellent impact and abrasion resistance.



# Advantages and Applications



## Advantages

- **Weight saving:**  
Mapress pipes and fittings offer weight savings of up to 60% compared to traditional products.
- **Fast installation:**  
Installation of pipework will hasten subsequent processes.
- **No fire hazard:**  
All joints made cold with no flames used. No consumable materials - welding gases, fluxes, solders or sealing compounds are required.
- **Suitable for use in clean environments:**  
Minimising disruption during fitting and maintenance.
- **Cost reductions are achieved by means of fast and safe assembly methods:**  
Allow typical installation time reductions of over 35% compared to welded or threaded joints.
- **Ideal for fabrication and modular design:**  
Sections can be pre-assembled to save time on-site.
- **High quality:**  
Mapress stainless steel pipes and fittings have an increased Molybdenum content to resist corrosion resulting in a longer service life.
- **Permanent:**  
Deformation during jointing of the pipes and fittings ensures joints do not loosen over the service life of the system.

## Applications

- Mepla used for potable, hot and cold and chilled water.
- Mapress fittings are suitable for hot and cold general water supplies (drinking water, sanitation water, pool water, heating and sprinkler systems).
- Mapress Cunife is ideal for seawater cooling and sanitation water supplies, and is approved for wet sprinkler systems where seawater is used.
- Interchangeable seal rings ensure compatibility for use in many other applications including; mineral oils, fuels, steam, solar thermal energy

Application	Material
Potable water	✓✓✓
Domestic fresh water	✓✓
Sanitary systems seawater	✓
Closed warm water heating	✓✓✓
Air conditioning	✓✓✓
Chilled water	✓✓
Deck wash systems	✓
Sanitary grey/black water drainage	✓
Sprinkler	✓✓✓
Fire main/ water spray/ foam	✓✓✓
Freshwater cooling	✓✓✓
Seawater cooling	✓
Compressed air	✓✓✓
Inert gas	✓✓
Hydraulic oil	✓
Fuel oil	✓✓✓
Cargo oil	✓
Lubrication oil	✓✓✓
Bilge systems	✓
Ballast systems	✓

- Geberit Mapress stainless steel ✓✓
- Geberit Mapress carbon steel ✓
- Geberit Mapress copper ✓
- Geberit Mapress CUNIFE ✓
- Geberit Mepla ✓

Application	Mapress seal ring material				
	Butylic Rubber (black)	H-NBR (Yellow-brown)	FEKM (light green)	FKM (dark green)	FKM (red)
Water	✓				
Wet sprinkler	✓				✓
Dry sprinkler					✓
Dry air	✓				
Fuel gases		✓			
Steam			✓		
Solar systems				✓	
Oxygen	✓				
Bleach	✓				
Fuel oil					✓
Lubricated air					✓
Cooling fluid					✓
Disinfectant					✓
Petrol					✓
Diesel					✓
Seawater					✓

# Approvals and References

## References

- Carnival Cruises
- Cunard
- Princess Cruises
- P & O Cruises
- Naval Vessels
- Holland America Line
- Costa Cruises
- AIDA
- Royal Caribbean Cruises
- Disney Cruises
- Norwegian Cruise Lines
- North Sea Ferries
- Irish Ferries
- TT Line
- Private yachts
- Cargo vessels

## Approvals



## Other products available from Geberit

### Geberit HDPE and Terrain PVCu drainage systems

- Above and below ground soil waste and rainwater systems
- HDPE suitable for chemical waste
- Suitable for both Industrial and Commercial applications
- Ideal for on/off site fabrication
- Offer fast reliable jointing
- Geberit Silent Db20 – Acoustic drainage system

### Geberit Installation systems for wall-hung sanitaryware, infra-red flushing controls and taps.

### Concealed flushing systems for WC's and urinals.

- Easy to install
- Hygienic
- Offer excellent water saving technology
- Maintenance friendly with easy access

### Head Office

Geberit Ltd  
 New Hythe Business Park  
 College Road  
 Aylesford  
 Kent ME20 7PJ

Tel: +44 (0)1622 717811  
 Fax: +44 (0)1622 716920  
 Literature: 0800 007 5133

### Industrial Direct

Tel: +44 (0)1622 795267 / 795268

### Ireland

Geberit Ltd  
 Seagoe  
 Co. Armagh  
 Northern Ireland  
 BT63 5HU

Tel: +44 (0)28 383 33311  
 Fax: +44 (0)28 383 33901

[www.geberit.co.uk](http://www.geberit.co.uk)